

Specification Sheet

Model Number	K800	K900
Countertop Faucet	Capacitive Touch	
Hot Water Power	700W	
Cold Water Power	—	210W
Hot Water Capacity	4.5 liters	
Cold Water Capacity	—	1.5 liters
Ambient Water Capacity	Direct Output	
Under-Sink Uni	W190xD290xH410mm	W265xD400xH410mm
Faucet Dimensions	W42xD170xH248mm	
Safety Features	All models are equipped with a leakage circuit breaker system and overload safety fuse.	
Voltage	220V	

Gleamous® K800 /K900 Under Sink Water Dispenser



Kitchen water
dispenser series products
Installations / Warranty

WARNING

For safe, it is essential to operate according to the information provided in this user manual to prevent fire, explosion, electric shock accidents, which may lead to financial loss, injury, or death. If you encounter any uncertainties, please contact our company or the purchasing dealer. Please do not attempt to operate it yourself.

Statement

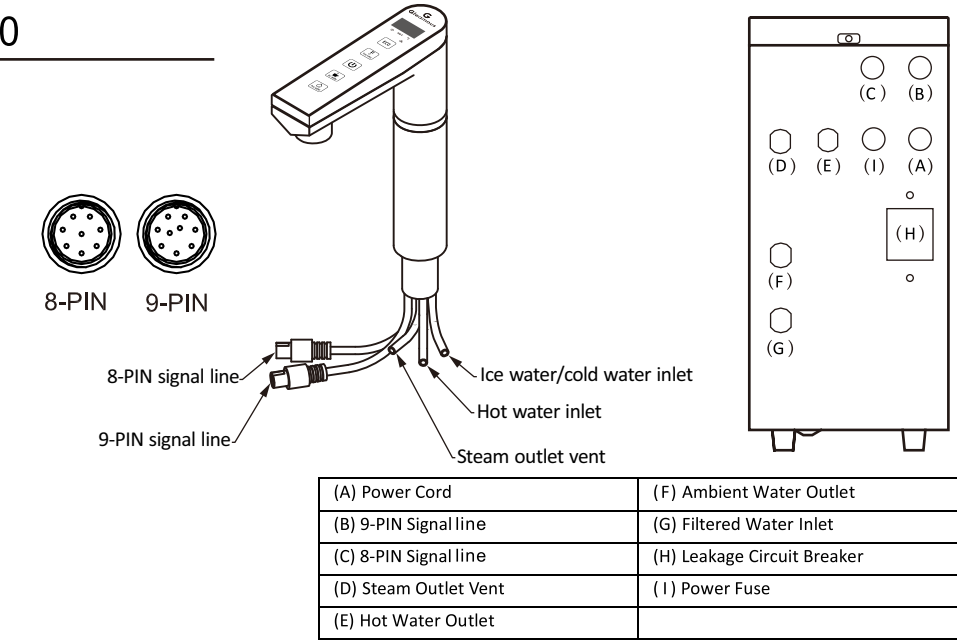
- When using your water purifier for the first time, please read this manual carefully.
- This manual contains important information on installing, using, and maintaining the water dispenser.
- The manufacturer will not be responsible for any issues due to disregard the safety and caution instructions.
- Electrical safety is guaranteed only when the house's grounding system complies with local regulations. Please do not use extension cords.
- When the water purifier can't work or is damaged, it should be repaired by qualified individuals to avoid any dangers.
- Do not move sideways or reversely in order to avoid damage and danger.
- The product should be connected to the main water pipe using new hose assembly. Reusing old hose assembly is not allowed.
- It is recommended to use municipal tap water as the water source. Using untreated surface water sources may reduce the lifespan of the water purifier and its filters.
- If the installation does not follow the instructions, and it results in personal injury or property damage, the company will not assume any responsibility.

Safe Use

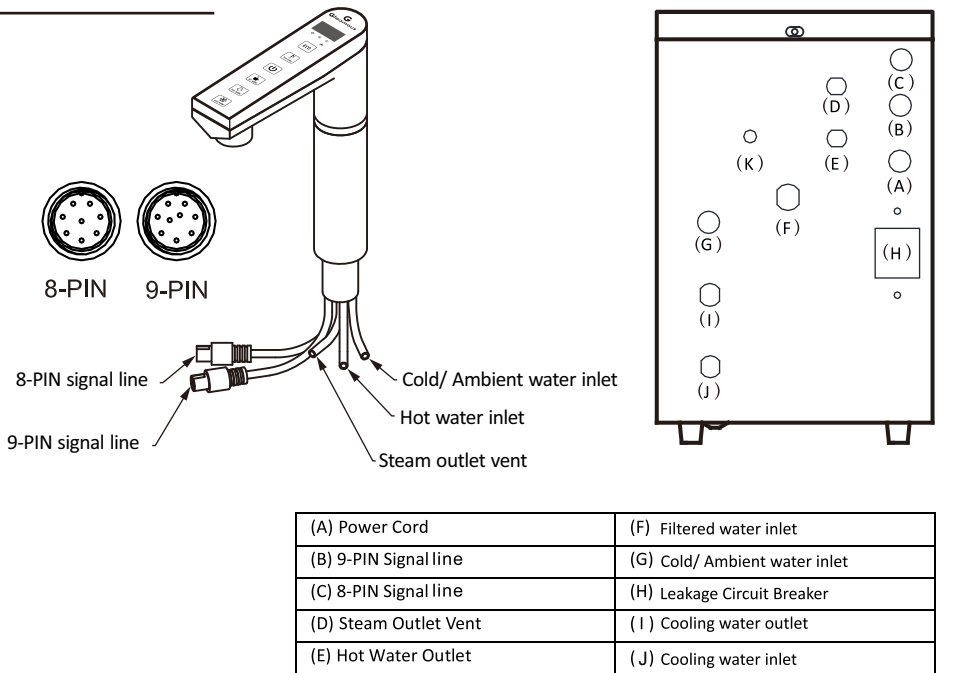
- Before using this product, please fully understand the product and use it under the supervision or guidance of those responsible for its safety.
- Please do not splash water on the product, as it may cause electrical component failure or electric shock.
- Please do not place heavy objects on top of the product, as it may cause deformation and malfunction.
- Please do not attempt to repair or replace any parts of the water purifier by yourself.
- Please regularly check the power supply of this product. If there is any damage or deterioration on its surface, please stop using the product immediately and contact our company's maintenance personnel to correctly replace the parts.
- Please ensure that the power outlet used for this product is properly grounded.
- If you are unsure whether the grounding of this product is proper, please have a qualified electrician and maintenance representative accompany you for inspection. Do not modify the attached plug of this product. If the plug does not fit the socket, please have a qualified electrician install a suitable socket.

		Before repairing and cleaning this product, remember to unplug the power plug to avoid any danger.
		Please do not disassemble the machine body and parts to avoid the risk of cuts, burns, and electric shock
		The machine should be placed on a flat and stable table or surface to avoid the risk of tilting or falling over.
		Please avoid stepping on, tripping over, or pinching the electrical circuits and pipes.
		The installation location of the water purifier should have a good drainage system and avoid excessively humid areas, ensuring dryness.
		Keep space around the water purifier for installation. Please do not place any obstructions and maintain a clearance of at least 10cm.
		The installation location should be within 3meters of the power source, water source, and drainage.
		The installation space for the water purifier should not have carpets or wooden flooring.

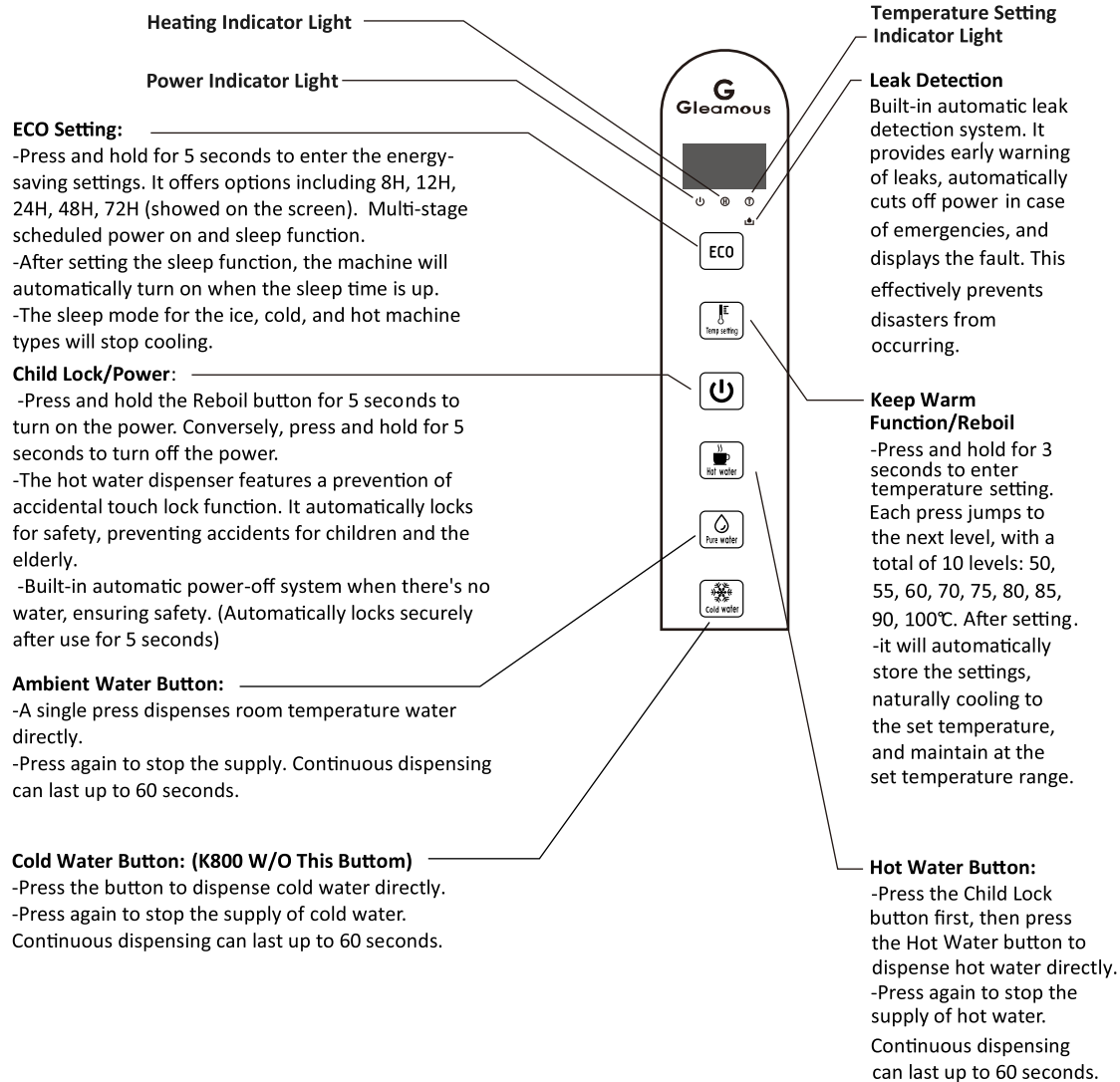
K800



K900



Touch Panel Faucet



WARNING

This product should not be used with extension cords or adapter plugs. The electrical and grounding wires must comply with national electrical regulations.

Heating Unit Installation

STEP 1. Preparation of Cabinet Hole

Please choose a location as close to the sink as possible for connecting the water and drainage pipes.

STEP 2. Prepare the electrical wiring and turn on the power

- This product must be operated with the correct rated voltage and frequency as specified in the instruction manual, and connected to a separate, properly grounded branch circuit.
- The power plug should be located in an accessible area, close to the water dispenser but not behind it, and within 1 meter from the side of the water dispenser.
- The power plug should be properly grounded, and the same socket should not be used with a double adapter or similar to connect other appliances.

STEP 3. Placing the Water Dispenser in the Cabinet

- Adjust all necessary height and balance settings before placing the water dispenser into the hole.
- Carefully place the machine into the cabinet and ensure that the inlet hose inside the cabinet and the water dispenser pipe are not twisted or damaged.

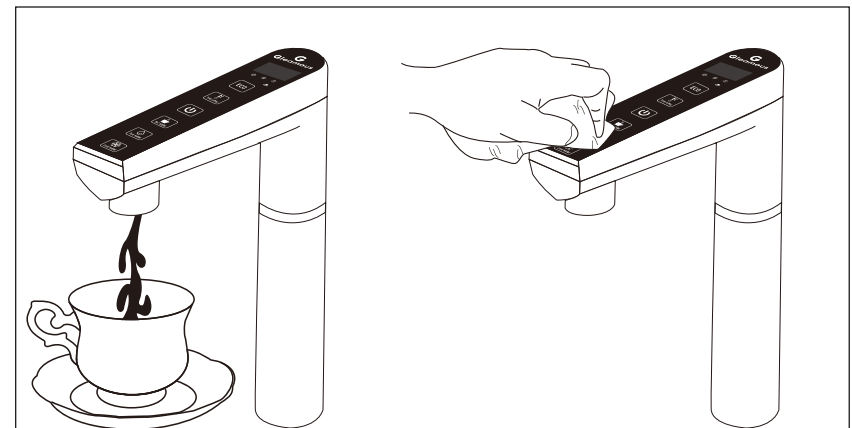


WARNING

When connecting or extending the hose, please ensure that the hose is not twisted. (The bending radius should be greater than 40mm)

STEP 4. Water Supply Selection

- The water pressure required for the water dispenser to operate is 98-490 kPa (2.5-4 kg/cm²). A pressure reducing valve needs to be installed if the water pressure is too high.
- If the water pressure does not reach the rated pressure of 98 kPa (1 kg/cm²) or is lower than the rated pressure, you will need to purchase a booster pump.
- The total length of the inlet pipe should be kept within 7 meters and avoid severe bending. Using a longer inlet pipe may cause water supply failure due to reduced water pressure.
- The cooling inlet pipe should be connected to the tap water supply (for cold water dispenser models).
- The inlet pipe should only be connected to a filtered water source suitable for drinking.
- Install the inlet pipe away from sources of heat, flammable materials, and chemicals.



The faucet panel may be wiped dry with a cloth if affected by water vapor, to ensure proper touch functionality.

Installation Steps

STEP 5. Installation of the Water Inlet Pipe

- Connect the water inlet pipe to the inlet of the filtration device. The outlet of the filter should be connected to a 1/4 inch RO tube, which is then connected to the water inlet of the water dispenser.
- When connecting the water source, please use the included ball valve switch. After installation, connect the cooling water inlet pipe to the ball valve switch.
- When connecting the pipes, use sealing tape or sealant to prevent water leakage.

STEP 6. Final Inspection and Assembly

- Use a wrench to check if the water pipe connections are tightened securely.
- After the water dispenser starts operation and water inlet is completed, you can check the operation and operation status, as well as whether there is any leakage.
- When you first use the machine, there may be air in the internal pipes, resulting in uneven water flow. In this case, please press the water dispensing button until the water flows smoothly.



WARNING

Due to the different water production rates of various filters, please be patient and wait for the water inlet process to complete

Startup

- After the machine is installed, the first batch of hot water produced may contain impurities and odors from the self-supplied water pipe or the water tank. When installing a water purifier, it is necessary to flush it first before connecting it to the water dispenser.
- After installing the water dispenser, the first batch of hot water (approximately 4 liters) and cold water (approximately 1.5 liters) produced should be discarded.
- After the initial installation of the water dispenser, let the machine operate normally for at least 40 minutes before using hot water. The temperature should reach 100℃ before consumption.
- If the drinking water is not used for a long time, please turn off the power and water supply. When restarting, please drain the water properly before using it again.

Instructions for Using the Water Dispenser

- You can choose ambient water, hot water, or cool water.
- Place the cup on the water tray. Align the cup with the water outlet and maintain an appropriate distance.
- Press the water dispensing button on the control panel. The water will flow from the water outlet into the cup.
- After dispensing water, wait a few seconds to catch any remaining water drips.

Cleaning of the electronic faucet

Do not use chemical solvents or strong acid-alkaline cleaning agents to wipe the panel.



WARNING

Do not let the elderly, weak, or children use it to avoid scalding.
Never use your hand to hold a cup to take hot water, to avoid scalding.
Never use cups that are too narrow or shallow. If hot water is poured into the cup, it may splash out.

Troubleshooting Guide

Before contacting the repair personnel, please read the following instructions carefully and make sure you can solve the problem first

Questions	Possible Causes	Solutions
The water dispenser cannot start	1.The power cord is not plugged in properly or is loose. 2.Circuit breaker for the water dispenser tripped or fuse burned out. 3.Main fuse burned out, circuit breaker tripped, or there is a power outage.	1.Confirm that the plug is inserted properly. 2.The water dispenser may be leaking electricity. Please unplug the plug, turn off the water source, and contact a repair technician for maintenance. 3.Do not increase the fuse capacity. 4.Please have a qualified electrician handle it if the problem is caused by circuit overload
Display showing "- - -" Water shortage indicator light is on	1. The local water supply is insufficient. 2. The water supply pipeline is tangled. 3. The filter is blocked and unable to supply water. 4. short-term large volume of water consumption leads to inadequate replenishment.	1. Please check another water faucet. 2.Straighten the water supply pipeline to ensure smooth water inlet. 3.Please replace the filter material or noofy the maintenance personnel for repair. 4.Wait for the water level to be replenished to the normal level.
The water dispenser cannot dispense water	The water dispenser is out of water, causing it to be unable to dispense water.	Please refer to the display showing '---' troubleshooting
The hot water is not hot, and the temperature cannot rise.	1. Activate the energysaving setng. The hot water is maintained at 60°C during standby. 2. Activate the insu laton senng. The hot water is maintained at the insulaton temperature. 3. The water dispenser is out of water, causing it to be unable to heat up. The water shortage indicator light is on. Atempng to dispense a large amount of hot water at once. 4. The internal components of the water dispenser are malfunctioning.	1.Deactivate the energy-saving setng. Wait for the hot water temperature to rise again. 2.Reset the insulaton seeng to the desired insulaton temperature. 3.Please refer to the display showing '---' troubleshooting 4.Please contact the repair personnel for on-site maintenance.

Q: Display panel not lit or unresponsive, how to deal with it?

A: Please check if the power cord is disconnected or if the circuit breaker has not tripped. Also, verify if the power switch is turned on.(refer to the installation and user manual)

Q: Display showing "- - -", how to deal with it?

A: Please check if the water source is normal and if the float switch is turned on.
Wait until the machine fills the water tank and the water is replenished.

Q: Water dispenser output is too low, how to deal with it?

A: The normal water supply is approximately 1.6 liters per minute.
If the output is insufficient, it should resume to normal when the water tank is full.

Q: Display showing "S-1" "S-2" "888", how to deal with it?

A: Please turn off the power and notify professional service personnel for repair.

Q: When the display panel is dimly lit, how to deal with it?

A: Please verify if the power supply is within the standard range (refer to the installation and user manual).